

**Single-family house near Vienna International
Center_500m from U1 and old Danube**



Objektnummer: 5880/58

**Eine Immobilie von Chimmo Investment & Relocation Consulting
GmbH**

Zahlen, Daten, Fakten

Art:	Haus - Einfamilienhaus
Land:	Österreich
PLZ/Ort:	1220 Wien
Baujahr:	2013
Wohnfläche:	117,38 m ²
Zimmer:	4,50
Bäder:	1
WC:	2
Balkone:	1
Terrassen:	1
Keller:	57,00 m ²
Heizwärmebedarf:	B 40,00 kWh / m ² * a
Kaufpreis:	790.000,00 €

Ihr Ansprechpartner



Chimmo Investment & Relocation Consulting GmbH

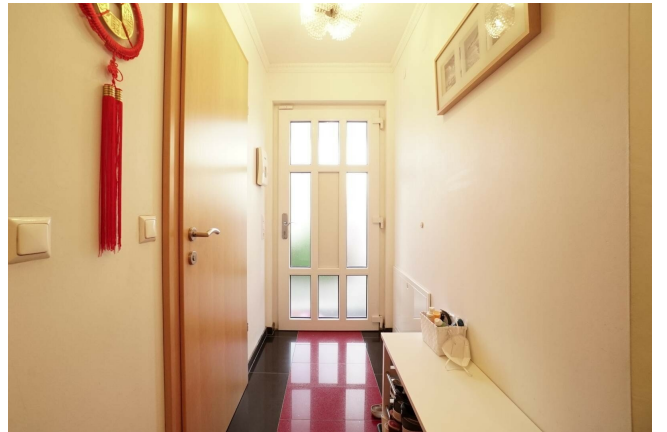
Chimmo Investment & Relocation Consulting GmbH
Wallensteinstraße 28/1-2
1200 Wien

T +43 13321604
H +4368110678605

Gerne stehe ich Ihnen für weitere Informationen oder einen Besichtigungstermin zur Verfügung.





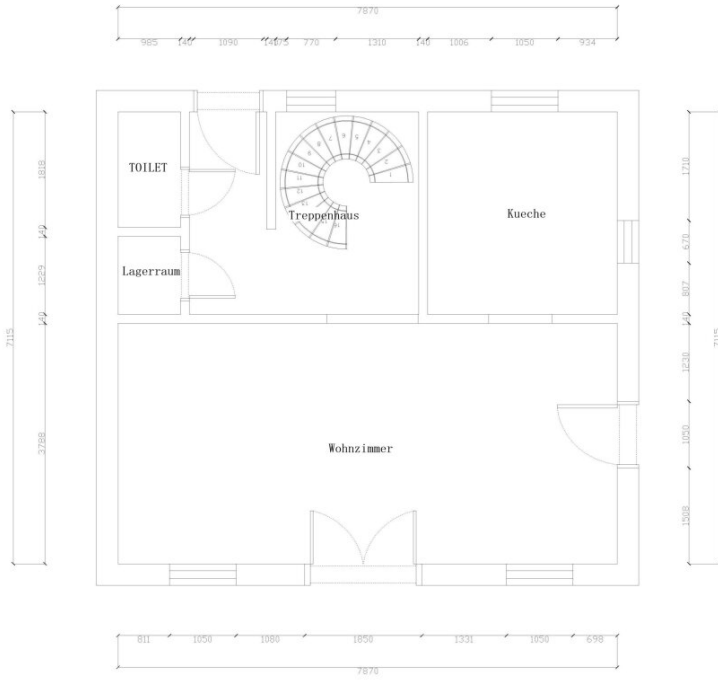












CAD PLAN F0

CHIMMO

Chimmo Investment &
Relocation Consulting
GmbH
+43 68110678605
Wallensteinstraße
28/1-2,
A-1200 Wien

备注: Remarks

设计师: **Katrina** Designer

联系方式: Tel

项目名称: 5880/82 Project

图纸名称: Drawing Name

CAD Plan F0

图纸比例: Drawing Scale

1:60

制图日期: Date

2022-05-18 18:39:39

图纸编号: Drawing No

版权说明

设计版权未经原作者或版权持有人的允许，
不得以任何形式转载、修改或再发布。
Without the original author's
copyright holder's permission, the
following Design Drawings shall not be
reproduced, modified or
used in any form.



CHIMMO

Chimmo Investment &
Relocation Consulting
GmbH
+43 68110678605
Wallensteinstraße
28/1-2, A-1200 Wien

备注: Remarks

设计师: Katrina Design

联系方式: Tel

项目名称: 5880/82 Project

图纸名称: Drawing Name
CAD Plan F-1

图纸比例: Drawing Scale
1:80

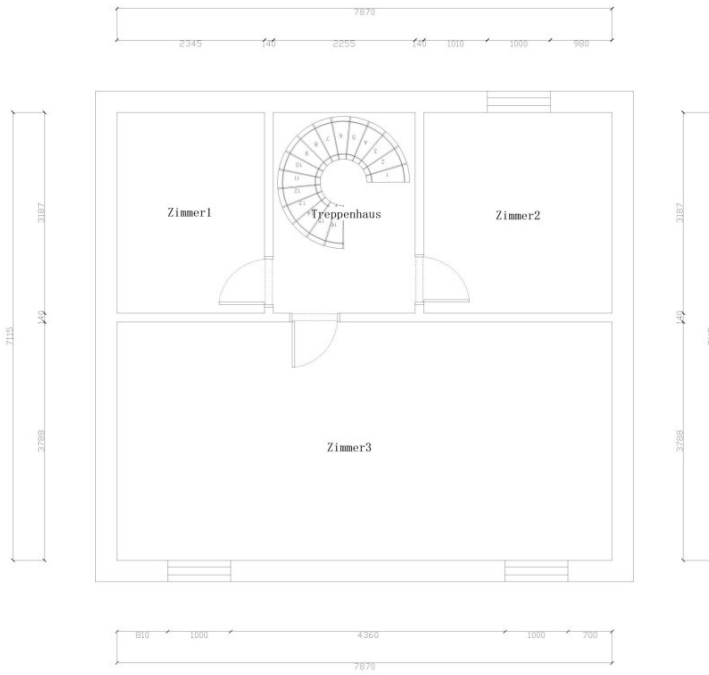
制图日期: Date
2022-05-18 18:39:39

图纸编号: Drawing No

版权说明

设计图纸未经原作者或者版权所有人允许，
不得以任何形式转载、修改或者使用。

Without the original author/
copyright holder's permission, the
following design drawings shall not be
reproduced, modified or
used in any form.



CAD PLAN F-1

Objektbeschreibung

Single-family house near Vienna International Center_500m from U1 and old Danube

Beautiful single family house near Danube and Vienna International Center.

Rental for the land is 442 Euro per month (Baurechtszins), similar as a running cost for a garden flat. The current renting contract with the church is 60 years and can be prolonged.

Benefits&Goodies:

- Beautiful garden, sunny and quiet!
- Single house at corner slot with great privacy, no sharing-wall with the neighbor house!
- 1km to Vienna International School.
- Close to Vienna International City!

You may find more information in the Location Export profile we prepared for you. Just send us an email with your name, phone number and living address or birthday. You will receive the document within 24 hours.

Here is the basic information you may want to know for now:

The house has 2 floors and a basement suitable for living purpose.

On the 1st floor you will find:

- Living room with connection to garden 32, 79m²
- Kitchen with connection to garden 10,30m²
- Garden with terrace 186,95m²
- Entrance space 8,48m²
- Storage space 1,16m²
- WC 1,68m²

On the 2nd floor you will have:

- 3 separate bedrooms or office 12,68m², 13,78m², 12,96m²
- WC and bathroom with window 8,47m²
- Balcony 4,73m²

The market price of the beautiful single-family house is 790000,-- Euro! The price may change due to the market situation.

Contact information:

Chimmo Investment & Relocation Consulting GmbH

+43 68110678605

office@chimmo.at

Wir sprechen deutsch / englisch / chinesisch. Bei Fragen rund um die Ansiedlung in Wien stehen wir Ihnen gerne zur Verfügung.

We speak German/English/Chinese. If you have any questions related with settling down in Vienna, please don't hesitate to contact us.

Your convenience is at our priority!

Wir weisen darauf hin, dass zwischen dem Vermittler und dem zu vermittelnden Dritten ein familiäres oder wirtschaftliches Naheverhältnis besteht.

Infrastruktur / Entfernungen

Gesundheit

Arzt <500m

Apotheke <500m

Klinik <2.000m

Krankenhaus <2.500m

Kinder & Schulen

Schule <500m

Kindergarten <500m

Universität <2.500m

Höhere Schule <2.500m

Nahversorgung

Supermarkt <500m

Bäckerei <500m

Einkaufszentrum <2.000m

Sonstige

Bank <500m

Geldautomat <500m

Post <500m

Polizei <500m

Verkehr

Bus <500m

U-Bahn <500m

Straßenbahn <500m

Bahnhof <500m

Autobahnanschluss <2.000m

Angaben Entfernung Luftlinie / Quelle: OpenStreetMap